

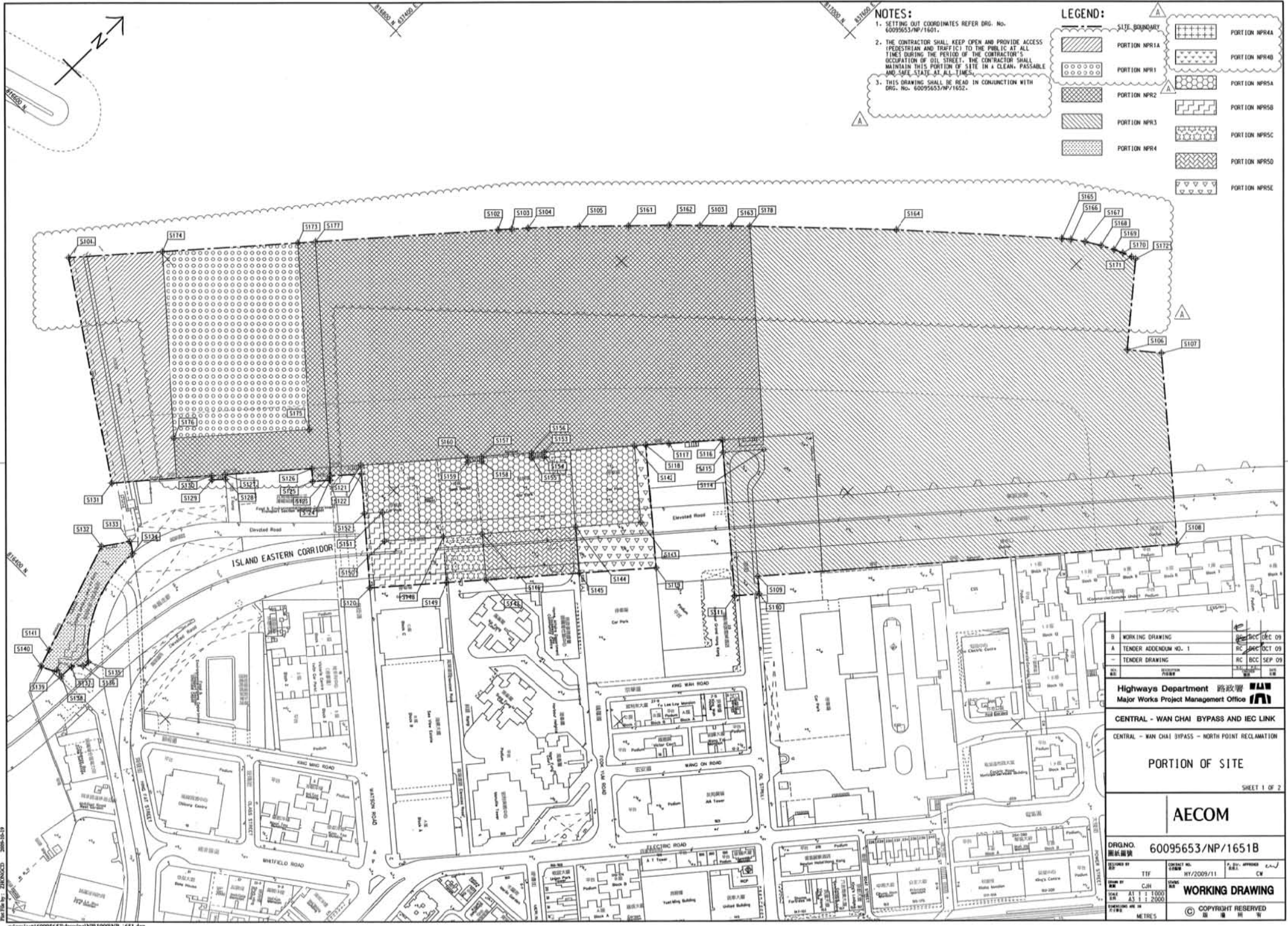
- LEGEND:**
- WATER QUALITY MONITORING STATIONS
- COOLING WATER INTAKES**
- C1 BONG HING CONVENTION AND EDUCATION CENTRE EXTENSION
 - C2 TELECOM HOUSE/HS ACADEMY FOR PERFORMANCE ARTS / SHALIN CENTRE
 - C3 BONG HING CONVENTION AND EDUCATION CENTRE PHASE 1
 - C4 WAN CHAI TOWER AND GREAT ENKLE CENTRE
 - C5 SHI HING KAC CENTRE
 - C6 DEFERRED EDUCATION STATION / WORLD TRADE CENTRE
 - C7 WONGSON HOUSE
 - C8 CITY GARDEN
 - C9 PROVIDENT CENTRE
 - C10 PROPOSED HUNPA EXTENSION
 - C15 SHI HING KAC CENTRE (REPROVISION)
 - C17 WONGSON HOUSE (TEMPORARY REPROVISION)
- MSD SALT WATER INTAKE**
- MSD01 WAN CHAI
 - MSD02 WAN CHAI (REPROVISION)
 - MSD07 FOKLOON SKATE
 - MSD09 TAI WAN
 - MSD10 CHA KWO LENG
 - MSD15 SAJ WAN HO
 - MSD17 CLARRY BAY
 - MSD19 SHEUNG WAN
 - MSD20 ELMEDY TOWN

DESIGNATED PROJECTS (DP)	WORKS CONTRACT	DESIGNATED PROJECT INVOLVED	CONSTRUCTION COMMENCEMENT
DP1 - CENTRAL-WAN CHAI BYPASS (CWB) INCLUDING ITS ROAD TUNNEL AND R.L.F. ROADS	CDD CONTRACT NO. HK/2009/01	DP1, DP3, DP6	APRIL 2010
DP2 - ROAD P2 AND OTHER ROADS (PRIMARY / DISTRICT DISTRIBUTOR ROADS)	CDD CONTRACT NO. HK/2009/02	DP1, DP3, DP5	APRIL 2010
DP3 - PERMANENT AND TEMPORARY RECLAMATION WORKS INCLUDING ASSOCIATED DREDGING WORKS ON WAN CHAI DEVELOPMENT PHASE I (WCD1) AREAS	CDD CONTRACT 3	DP1, DP3	END 2011
DP4 - TEMPORARY TYPHOON-SHELTER (DP4 NOT TO BE IMPLEMENTED)	CDD CONTRACT 4	DP1, DP3	END 2010
DP5 - WAN CHAI EAST SEWAGE OUTFALL	CDD CONTRACT 5	DP2	2015
DP6 - DREDGING FOR THE CROSS-HARBOUR WATER MAINS	HyD CONTRACT NO. HY/2009/11	DP3	18 MARCH 2010
	HyD CONTRACT NO. HY/2009/15	DP1, DP3	SEPTEMBER 2010
	HyD CONTRACT NO. HY/2009/19	DP1	OCTOBER 2010
	HyD CONTRACT NO. HY/2009/19	DP1	NOVEMBER 2010
	HyD CONTRACT T2	DP1, DP3	MID 2013

Plot File by 1_2010-05-17_08:00

PATH: p:\projects\60041297\CADD\MS\SETCH\C5\SETCH_001.dwg

 土木工務發展署 Civil Engineering and Development Department	
WAN CHAI DEVELOPMENT PHASE II WAN CHAI DEVELOPMENT PHASE II AND CENTRAL-WAN CHAI BYPASS - SUPPLY, FIELD MEASUREMENT AND TESTING WORKS (STAGE 1)	
LOCATIONS OF WATER QUALITY MONITORING STATIONS	
	
ORIGINAL DRAWING NO. 60041297/C5/SK001	
DRAWN BY: AMY CHECKED BY: AEC DATE: 11/2010 UNIT: METRES	SCALE: AS SHOWN DATE: 11/2010 PROJECT: C5/SK001
COPYRIGHT RESERVED	



NOTES:

1. SETTING OUT COORDINATES REFER DRG. No. 60095653/NP/1601.
2. THE CONTRACTOR SHALL KEEP OPEN AND PROVIDE ACCESS (PEDESTRIAN AND TRAFFIC) TO THE PUBLIC AT ALL TIMES DURING THE PERIOD OF THE CONTRACTOR'S OCCUPATION OF OIL STREET. THE CONTRACTOR SHALL MAINTAIN THIS PORTION OF SITE IN A CLEAN, PASSABLE AND SAFE STATE AT ALL TIMES.
3. THIS DRAWING SHALL BE READ IN CONJUNCTION WITH DRG. No. 60095653/NP/1652.

LEGEND:

[Dotted pattern]	PORTION NPR1	[Cross-hatch pattern]	PORTION NPR4
[Diagonal lines /]	PORTION NPR2	[Diagonal lines \]	PORTION NPR5
[Diagonal lines /]	PORTION NPR3	[Diagonal lines \]	PORTION NPR6
[Diagonal lines /]	PORTION NPR4	[Diagonal lines \]	PORTION NPR7

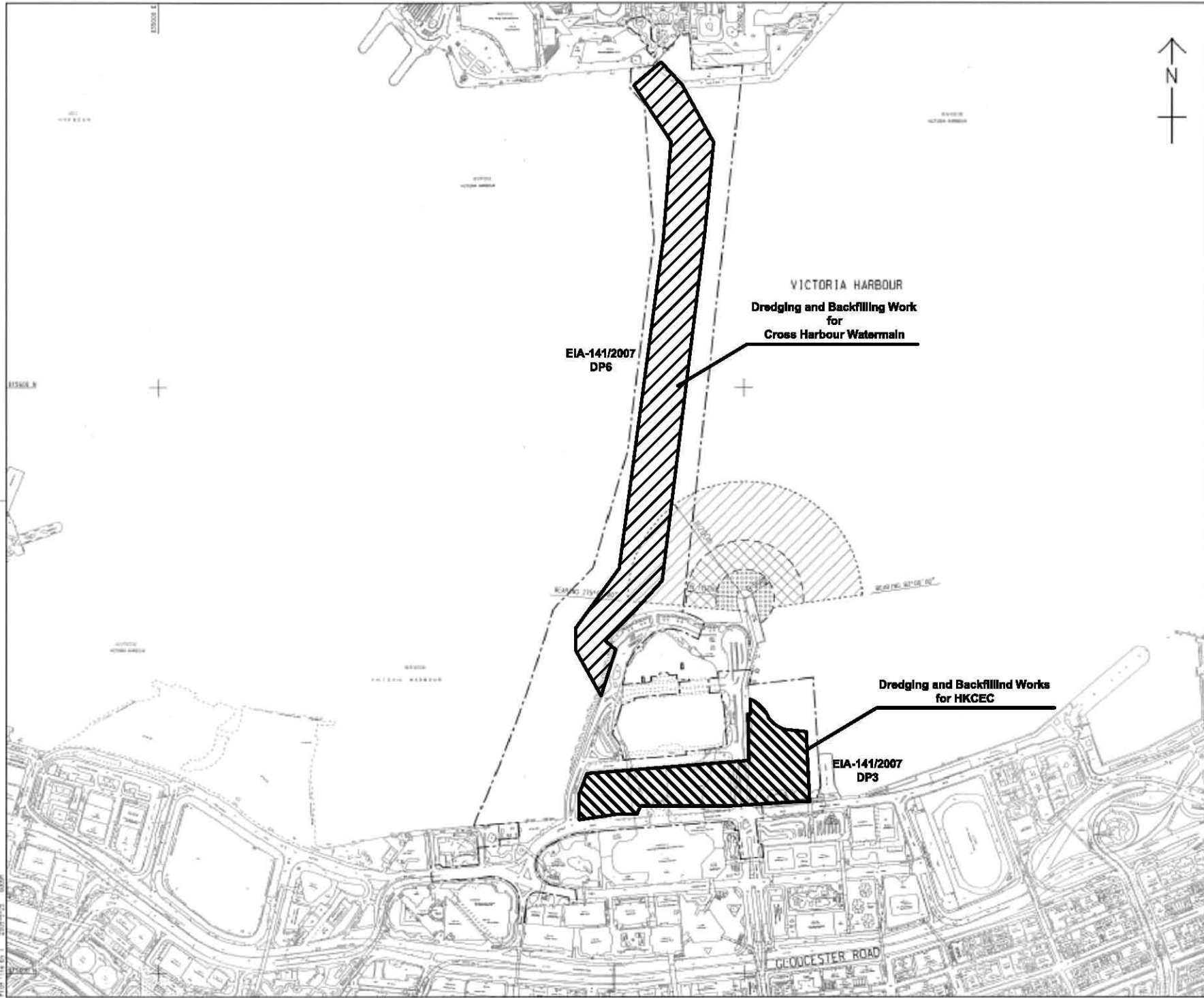
B	WORKING DRAWING	REV	DEC 09
A	TENDER ADDENDUM NO. 1	RC	OCT 09
-	TENDER DRAWING	RC	SEP 09

Highways Department 路政署
Major Works Project Management Office

CENTRAL - WAN CHAI BYPASS AND IEC LINK
CENTRAL - WAN CHAI BYPASS - NORTH POINT RECLAMATION

PORTION OF SITE
SHEET 1 OF 2

AECOM	
DRGNO. 圖紙編號	60095653/NP/1651B
DESIGNED BY 設計人	TTF
CHECKED BY 校核人	CJH
DATE 日期	AT 17 2009
SCALE 比例尺	AS SHOWN
ISSUED BY 發出人	WORKING DRAWING
APPROVED BY 核准人	CW
COPYRIGHT RESERVED 版權所有	



LOCATION PLAN
SCALE 1 : 5000

- NOTES:
1. ALL DIMENSIONS ARE IN METRES UNLESS OTHERWISE NOTED.
 2. THE RESTRICTION ZONE IS THIS DRAWING WILL COME INTO EFFECT AFTER THE OPERATION OF THE GOVERNMENT HULLING AT EDP/D/D/E LAST.

LEGEND:

- CONTRACT BOUNDARY
- [Hatched Box] WORKING RESTRICTION ZONE
- [Cross-hatched Box] NAVIGATION AND WORKING RESTRICTION ZONE
- [Dotted Box] WORKING BARGE, NAVIGATION AND WORKING RESTRICTION ZONE

TENDER ADDENDUM NO. 4	SEP 25, 2009
TENDER ADDENDUM NO. 1	SEP 25, 2009
TENDER DRAWING	SEP 25, 2009

CEDD 土木工程發展署
Civil Engineering and Development Department

WAN CHAI DEVELOPMENT PHASE II
WAN CHAI DEVELOPMENT PHASE II -
KONG KONG CONVENTION AND EXHIBITION CENTRE
**RESTRICTED ZONE FOR
CONSTRUCTION VESSELS**
(Contract no: HK/2009/01)

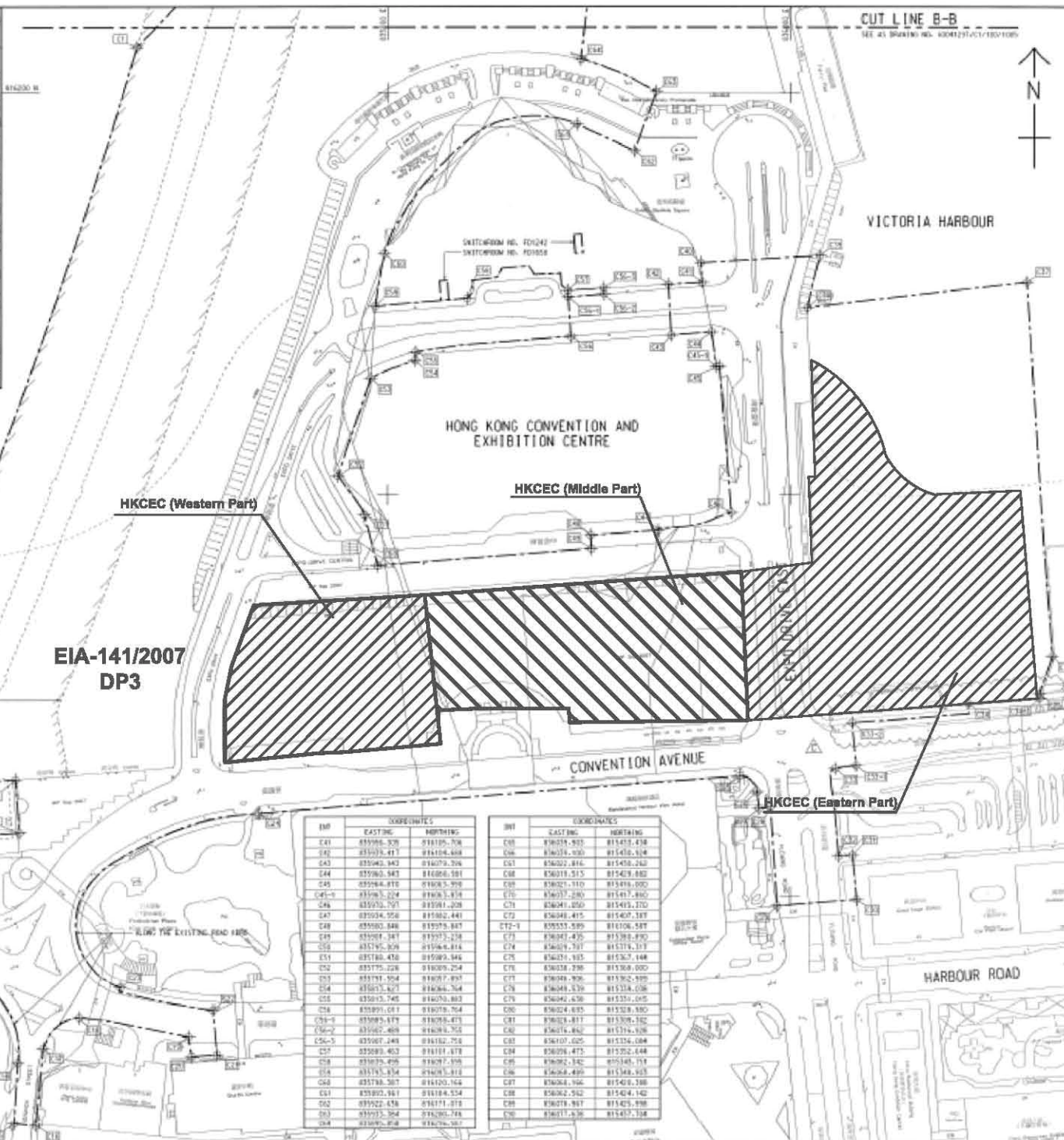
AECOM

DRGNO. 圖號	60041297/C1/100/1010B
DATE 日期	16/2009/01
SCALE 比例尺	AS 1:5000
COPYRIGHT RESERVED	



INSET 'A'
SCALE 1:1000

CENTRAL DISTRICT



EIA-141/2007
DP3

HKCEC (Western Part)

HKCEC (Middle Part)

HKCEC (Eastern Part)

INT	COORDINATES	
	EASTING	NORTHING
C41	835986.528	818105.708
C42	835979.417	818104.408
C43	835963.943	818079.326
C44	835963.543	818086.581
C45	835964.818	818085.528
C46	835965.524	818085.514
C46	835955.757	818081.208
C47	835954.956	818082.441
C48	835950.846	818075.887
C49	835951.347	818073.238
C50	835950.828	818066.814
C51	835948.478	818080.846
C52	835975.226	818089.224
C53	835971.504	818077.897
C54	835973.627	818084.764
C55	835973.745	818079.883
C56	835991.071	818078.764
C56-1	835995.679	818078.873
C56-2	835982.468	818078.765
C56-3	835987.248	818182.758
C57	835983.403	818181.878
C58	835978.498	818077.198
C59	835978.574	818081.818
C60	835978.587	818120.164
C61	835990.881	818184.524
C62	835923.434	818171.812
C63	835923.584	818280.788
C64	835923.818	818276.307

INT	COORDINATES	
	EASTING	NORTHING
C65	836028.933	818413.438
C66	836034.030	818413.614
C67	836022.816	818413.240
C68	836019.515	818413.882
C69	836021.110	818414.000
C70	836027.289	818413.880
C71	836041.050	818413.270
C72	836048.415	818407.187
C72-1	835555.589	818106.587
C73	836047.435	818385.890
C74	836049.797	818374.107
C75	836024.185	818382.148
C76	836038.298	818388.000
C77	836048.906	818382.888
C78	836048.439	818374.038
C79	836042.630	818351.015
C80	836024.635	818328.880
C81	836028.417	818308.182
C82	836024.882	818378.148
C83	836107.025	818326.084
C84	836098.473	818322.444
C85	836092.342	818348.714
C86	836084.499	818348.925
C87	836084.196	818348.388
C88	836082.512	818348.142
C89	836078.987	818345.898
C90	836077.630	818347.198

CUT LINE B-B
SEE AT DRAWING NO. A00025/C1/100/1006



KEY PLAN
SCALE 1:10000

NOTE:
1. FOR NOTES & LEGEND, REFER TO DRAWING NO. A00025/C1/100/1006.

INT	COORDINATES	
	EASTING	NORTHING
C1	836875.205	818222.551
C2	836875.207	818222.599
C3	836874.561	818224.825
C4	836871.020	818231.014
C5	836882.492	818229.522
C6	836881.584	818218.612
C7	836886.540	818215.197
C8	836886.191	818217.147
C9	836886.433	818212.241
C10	836891.082	818207.050
C11	836885.389	818208.075
C12	836877.486	818208.107
C13	836923.460	818204.817
C14	836886.433	818217.122
C15	836874.285	818208.593
C16	836875.195	818205.525
C17	836888.138	818204.441
C18	836846.085	818208.816
C19	836871.421	818205.587
C20	836902.537	818220.881
C21	836915.295	818217.484
C22	836913.183	818214.245
C23	836827.086	818209.074
C24	836926.984	818221.670
C25	836915.280	818220.251
C26	836881.647	818212.286
C27	836904.025	818243.896
C28	836906.218	818244.245
C29	836911.525	818236.180
C30	836883.781	818208.687
C31	836837.216	818228.470
C32	836824.142	818225.117
C33	836821.081	818215.482
C34	836826.290	818224.700
C35	836827.428	818221.056
C36	836808.187	818218.280
C37	836824.812	818228.093
C38	836824.747	818228.285
C39	836828.850	818219.194
C40	836819.190	818228.037
C41	836828.810	818227.295
C42	836818.906	818229.080
C43	836825.682	818215.512

C	TENDER ADDENDUM NO.4	SHEN JYL DEP C8
B	TENDER ADDENDUM NO.2	SHEN JYL DEP C8
A	TENDER ADDENDUM NO.1	SHEN JYL DEP C8
-	TENDER DRAWING	SHEN JYL DEP C8
20	2009	SEP 08

土木工程師學會
Civil Engineering and
Development Department

WAN CHAI DEVELOPMENT PHASE II

WAN CHAI DEVELOPMENT PHASE II -
CONTRACT NO. HK/2009/01
HONG KONG CONVENTION AND EXHIBITION CENTRE

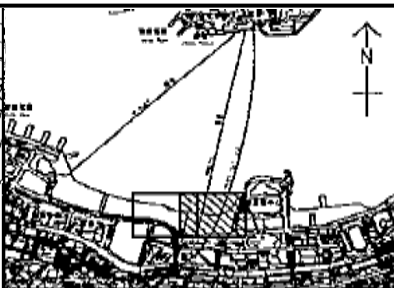
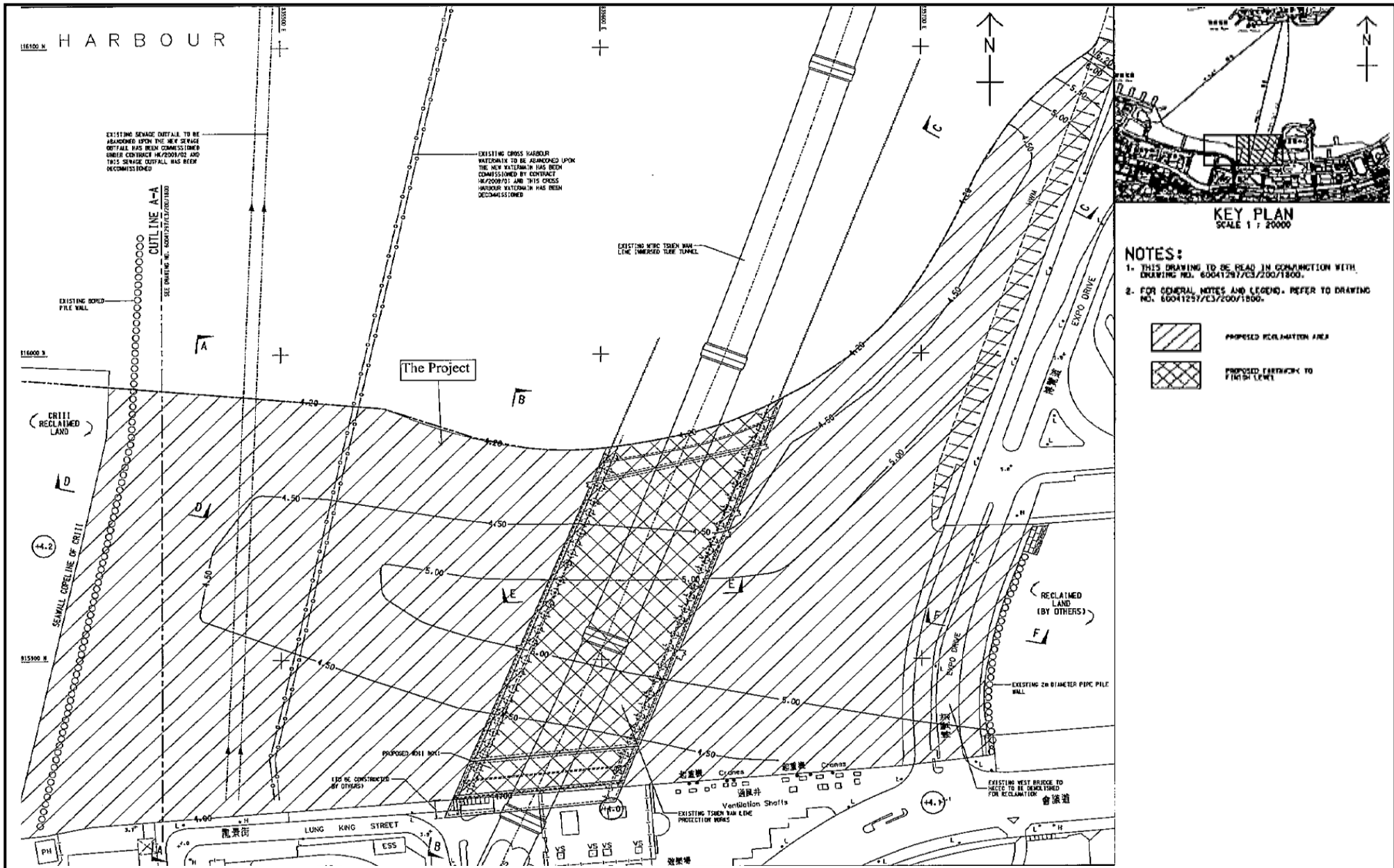
SITE BOUNDARY
SETTING OUT PLAN
(Contract no. Hk/2009/01)

AECOM

DRGNO.
圖號
60041297/C1/100/1006C

SCALE	1:1000	DATE	2009/09/01	BY	PM
DESIGNED BY	HSJ	CHECKED BY	HSJ	DATE	2009/09/01
DRAWN BY	HSJ	DATE	2009/09/01	SCALE	1:1000
DATE	2009/09/01	SCALE	1:1000	DATE	2009/09/01

© COPYRIGHT RESERVED



KEY PLAN
SCALE 1 : 20000

NOTES:

1. THIS DRAWING TO BE READ IN CONJUNCTION WITH DRAWING NO. 60041297/C3/200/1800.
2. FOR GENERAL NOTES AND LEGEND, REFER TO DRAWING NO. 60041297/C3/200/1800.

- PROPOSED RECLAMATION AREA
- PROPOSED EARTHWORK TO FINAL LEVEL

Project Title: Wan Chai Development Phase II – Central Wan Chai Bypass at Wan Chai West (Contract No. HK/2012/08) – Marine Works
工程項目名稱: 灣仔發展計劃第二期 - 中環灣仔繞道-灣仔西段(合約編號:HK/2012/08)-海事工程
Environmental Permit No. : FEP-08/356/2009
環境許可證編號 : FEP-08/356/2009

Figure 1b: General Layout of the Project
圖 1b: 工程項目佈局圖

(This figure was prepared based on Figure 1b of Application for Further Environmental Permit (Application No.: FEP 172/2016) (本圖是根據申請新的環境許可證 (申請書編號 FEP-172/2016) 圖 1b 編製)



港口
HARBOUR



LEGEND:



WORKS AREA



DREDGING AREA FOR
MITIGATION OF ODOUR(DP3)



SITE BOUNDARY



中國建築工程(香港)有限公司
CHINA STATE CONSTRUCTION ENG. (HONG KONG) LTD.

Highways Department
CONTRACT NO. HY/2009/15
CENTRAL-WAN CHAI BYPASS - TUNNEL
(CAUSEWAY BAY TYPHOON
SHELTER SECTION)

TITLE
LOCATION PLAN OF WORKS AREA

DRG. NO.
CWBT/EPD/001B

SCALE
1:1000 @ A0
DATE
MAY 2010 08 11
MILLIMETERS
COPYRIGHT RESERVED

維多利亞公園
Victoria Park

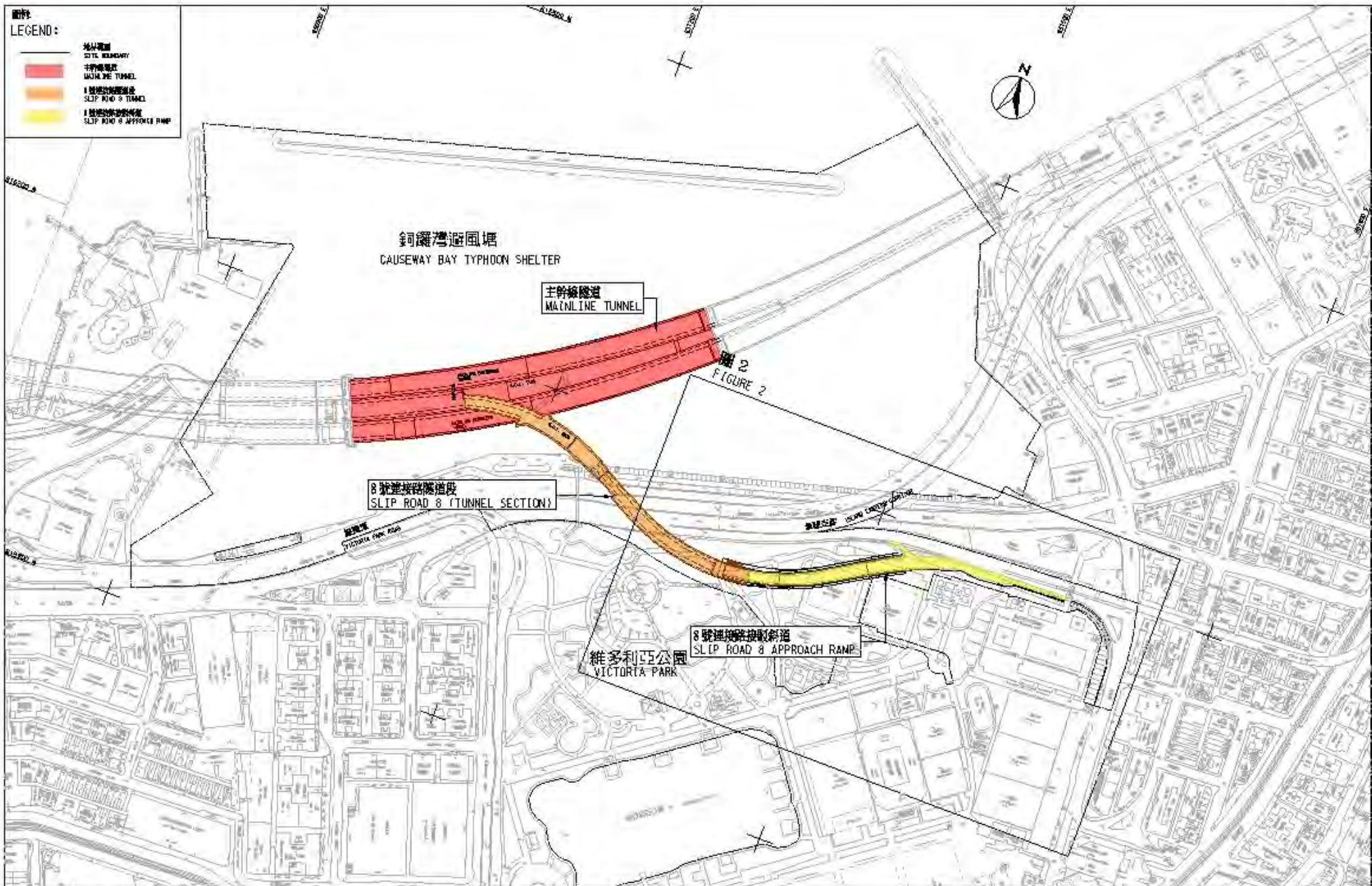


圖1- 合約編號 HY/2010/08 中環灣仔繞道-8號連接路段隧道

FIGURE 1 - CONTRACT NO. HY/2010/08 - CENTRAL - WAN CHAI BYPASS - TUNNEL (SLIP ROAD 8 SECTION)

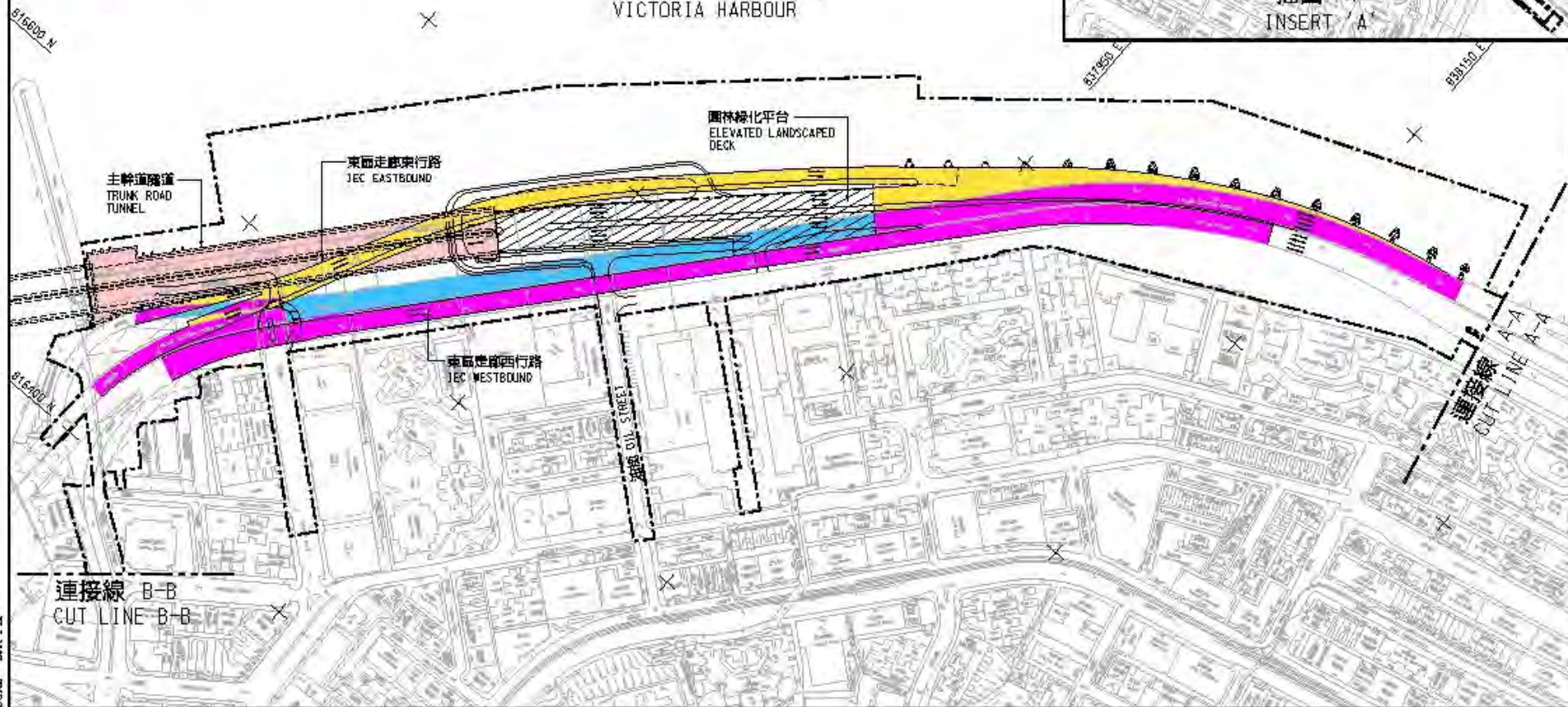
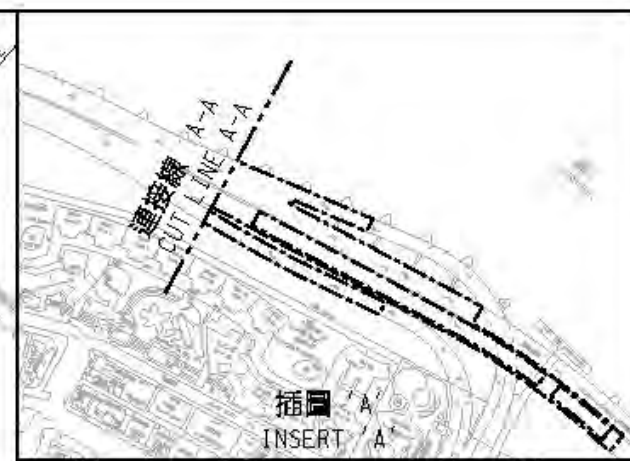
SCALE 1 : 3000

圖例：
LEGEND:

-  地界範圍
SITE BOUNDARY
-  園林綠化平台
LANDSCAPED DECK
-  主幹道隧道
TRUNK ROAD TUNNEL
-  擬議高架道路
PROPOSED ELEVATED CARRIAGEWAY
-  現有高架行車道將予拆卸
EXISTING ELEVATED CARRIAGEWAY TO BE DEMOLISHED
-  現有高架行車道將予拆卸及重建
EXISTING ELEVATED CARRIAGEWAY TO BE DEMOLISHED AND RECONSTRUCTED



維多利亞海港
VICTORIA HARBOUR



合約編號 HY/2009/19 - 中環灣仔繞道 - 北角段隧道及東區走廊連接路

CONTRACT NO. HY/2009/19 - CENTRAL-WAN CHAI BYPASS - TUNNEL (NORTH POINT SECTION) AND ISLAND EASTERN CORRIDOR LINK

SCALE 1 : 3000